

PANORAMA ULTRA

WIDE FORMAT RETRACTABLE SCREENS

MAKE THE MOST OF YOUR OUTDOORS!

Whether it's a warm summer day or a crisp fall evening, spending time outdoors is one of the joys of life. It could be in your own backyard or at your favorite restaurant's patio. If you want to make the most of your backyard, or you own a restaurant and want to offer your customers an outdoor option, the PanoramaUltra retractable screen solution is the answer for you.

Why PanoramaUltra?

You can rely on Stoett to provide you with the absolute best in outdoor screen solutions. Not only are we dedicated to designing products with a custom feel while using long-lasting materials but also doing it all with our customers' needs foremost in our mind. We've worked with residential and commercial projects across North America and we have the reputation and expertise to help you make the most of your outdoors!

- Better use of space
- Enjoy the outdoors
- Experience positive benefits of fresh air
- Convenience and comfort
- Controlled exposure to sun



The PanoramaUltra retractable screen is proudly Made in America and purpose-built to give your patio, porch, or pool area a level of flexibility unmatched by other outdoor solutions. The multiple levels of protection provided by the PanoramaUltra can be used to protect your guests from annoying insects, harmful UV rays, and inclement weather.



What Makes PanoramaUltra the Right Choice?

We want the designing, manufacturing, delivering, and installation process of Stoett's high-quality retractable screens to be a breeze. The following are some key points that are important for you to consider when choosing the right retractable screen system.



Frame

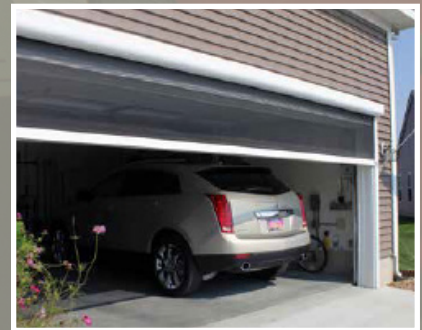
With a sturdy frame that fits most openings and simple installation for both DIYers and contractors, the PanoramaUltra system delivers a peace of mind for a more pleasant indoor-outdoor experience.

- Custom-sized components fit openings up to 24W x 13H
- Side fabric retention system provides screen wind safety rating up to 30 mph
- High-grade aluminum for durability and corrosion resistance
- Four powder-coated colors to satisfy your desired aesthetic
- Three different series to match your specific size requirements

Fabrics

The high-quality fabrics (either mesh or vinyl) of the PanoramaUltra offer the performance, durability, and aesthetics you want to enjoy your outdoor space for years to come!

- High-grade mesh protects from insects, UV rays, inclement weather
- Clear vinyl that is thicker than competitor and resistant to "waving"
- Fabrics (both mesh and vinyl) are attached by seam welding, NOT glued or sewn on
- Variety of colors to match your architecture
- Reduced sagging due to shock-absorbing track design that provides more tension on the fabric



Functionality

If you're looking to make an outdoor space for your guests that is comfortable and attractive, the PanoramaUltra is the screen system for you. The retractable screen functions as a privacy screen, protection from UV rays and insects or curtain against bad weather—easy to open or close in seconds.

- Specially selected fabrics to meet your needs
- Motorized operation includes automatic obstruction stop
- Low-friction mechanism minimizes screen jams
- Available in either motorized or manual operation



Flexibility

Not only does the PanoramaUltra retractable screen system have flexible uses (defense against insects, harmful UV rays, and inclement weather) there are also multiple mounting options to blend in with your home or business architecture and design.

- Outside surface mount with contemporary square, color-matched top housing and side rails
- Inside mount between jambs offers a more integrated look to the opening
- Dual screen mount includes both an insect/UV/privacy screen and vinyl weather curtain
- Custom retractable screens with a top roller tube (no housing) that integrates into the wall

Discover more at:

- <https://www.stoett.com/retractable-screens/panoramaultra-retractable-clear-vinyl>
- <https://www.stoett.com/retractable-screens/retractable-combo-screens>

PanoramaUltra Retractable Combo Screen

PanoramaUltra retractable combo screens combine shade screen and clear vinyl screens together to provide privacy and optimal protection from insects, weather, and sun. Utilize clear vinyl for those harsh inclement weather conditions. Retract the vinyl on the outside and utilize just the shade screen to keep pesky insects and debris out of your patio while maximizing airflow. Retract both the vinyl and shade screen for a fully open patio on those warm sunny days.

- Up to 24ft Wide x 13ft Tall
- Multiple Mounting Options
- Many Color Options
- Robust Screen Retention
- High-Grade Structural Materials
- Motorization & Remote Control Options



Easy Installation

Installing a PanoramaUltra retractable screen system on either small or large architectural locations can be done by your contractor or you can search for a local Stoett products dealer for more information.

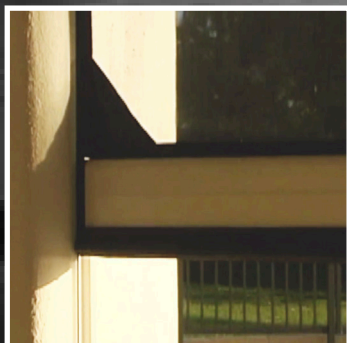
If you have the right tools and know-how, you could install your own PanoramaUltra screen system —we'll even walk you through it with our superior installation support!

Get Started

When you're ready to make the most of your outdoor space, visit <https://www.stoett.com/retractable-screens/panoramaultra-retractable-patio-screens>.



Forgiving tolerances



One installation method for all sizes



Quick clip-mounting system

Available Options

There are a wide range of color combinations to choose from with the PanoramaUltra retractable screen system. You don't have to worry about matching the color scheme of your home or restaurant. There are also different fabric material choices (mesh and vinyl) that protect you from harmful UV rays, pesky insects, and inclement weather. To add even more convenience, wireless sensors and smartphone connectivity are available for motorized units. Choose your style from the options below!

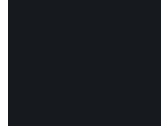
Housing and Track Powder-Coated Colors



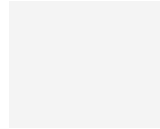
Brown



Desert Tan

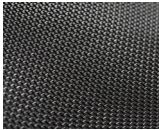


Black

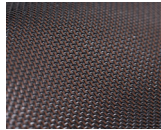


White

80% and 90% Solar Screen Fabric Colors



Black



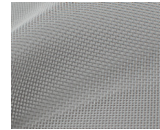
Black Brown



Brown



Desert Sand



Dusk Grey

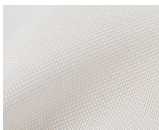


Sandstone

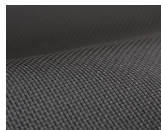


White

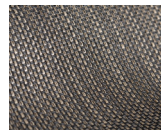
95% Solar Screen Fabric Colors



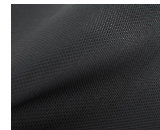
Bone



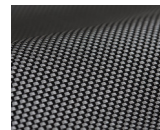
Charcoal



Espresso Texture



Flat Black



Granite



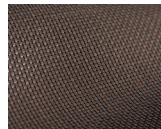
Sable



Shadow Texture



Stone Texture



Tobacco



White

Clear Vinyl Curtain Fabric Popular Colors (40 Total Colors) *See full palette of colors at Stoett.com*



Aluminum



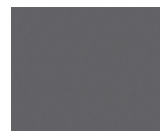
Black



Boulder



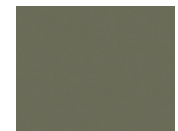
Camel



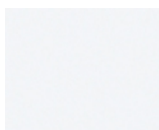
Concrete



Marine



Olive

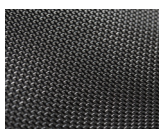


White

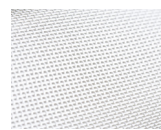
Control your PanoramaUltra retractable screen system directly from your smartphone!



Insect Screen Choices (Super Screen or No-See-Um)



Black



White

- **Super Screens** are durable and long-lasting because they resist deterioration, punctures, tears and mildew. Available in black or white.

- **No-see-um Screens** are made of an extra-fine mesh to protect against smaller "no-see-um" insects. Available in black or white.

PanoramaUltra will help you make more of your outdoors!

For more information about the PanoramaUltra retractable screen system or other Stoett products, visit stoett.com.

All of Stoett's products are:

Stoett Family of Companies



Made in
America



Custom Fit



Professionally
Installed

STOETT
INDUSTRIES

 **LIBART**
MOTION IN ARCHITECTURE