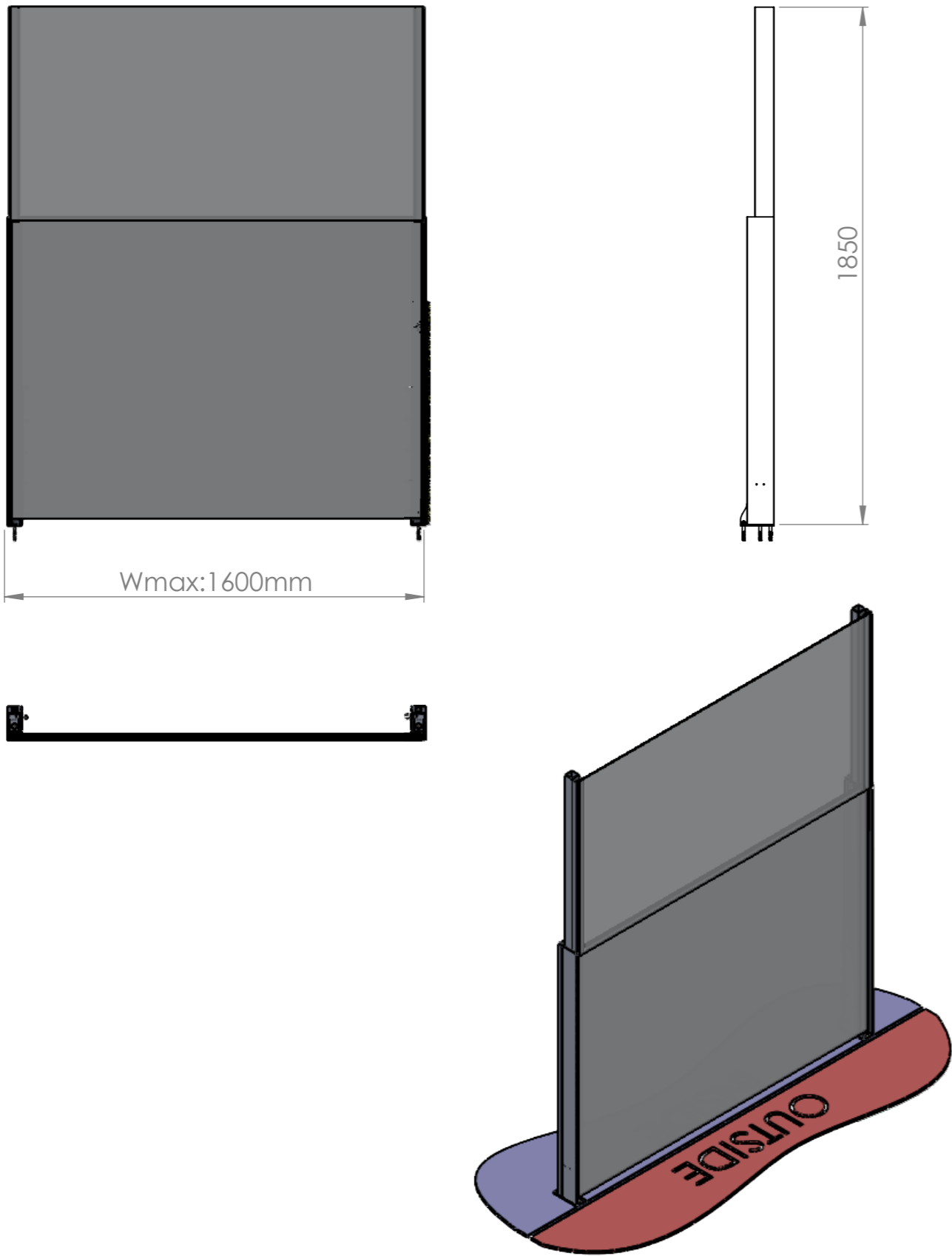
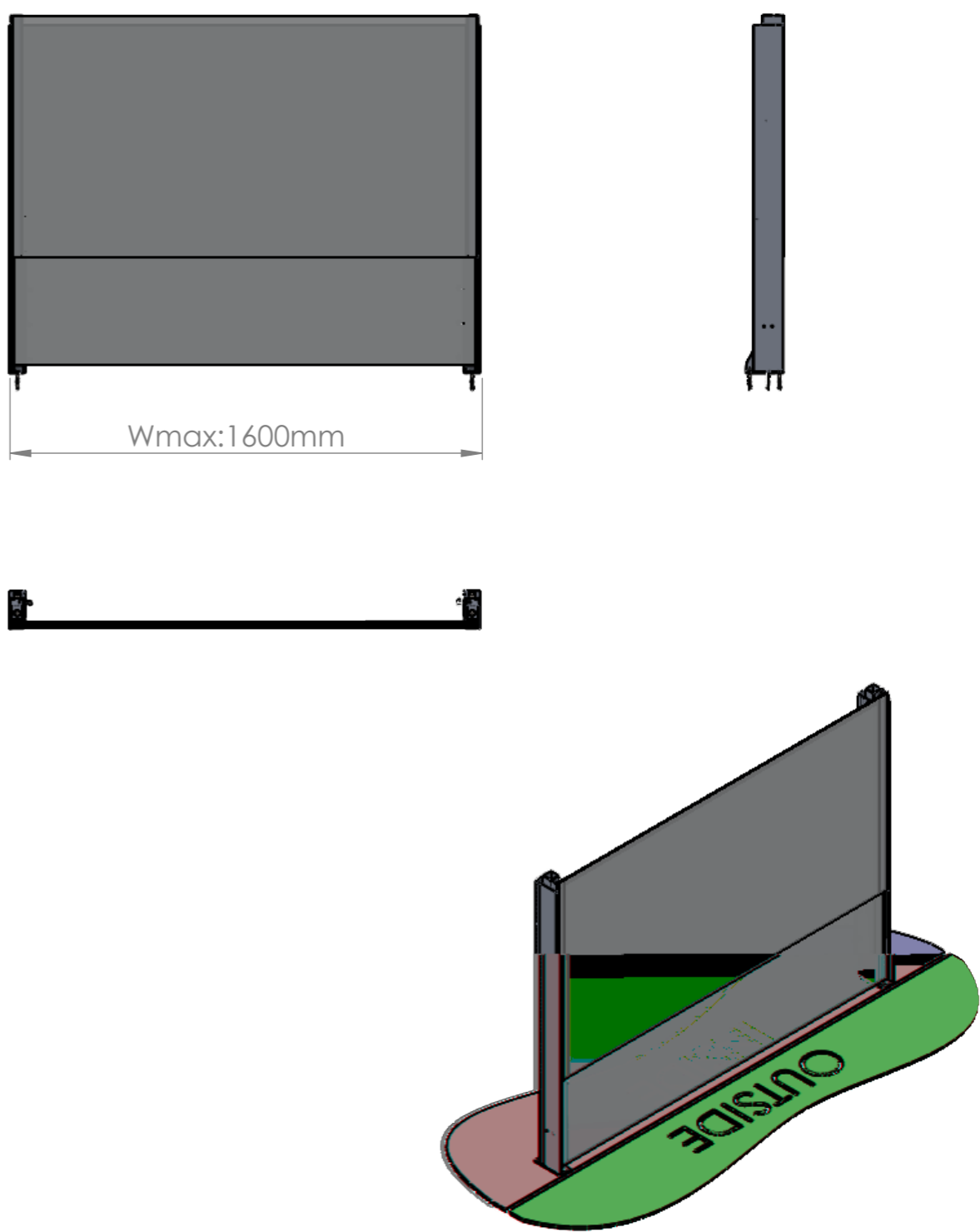
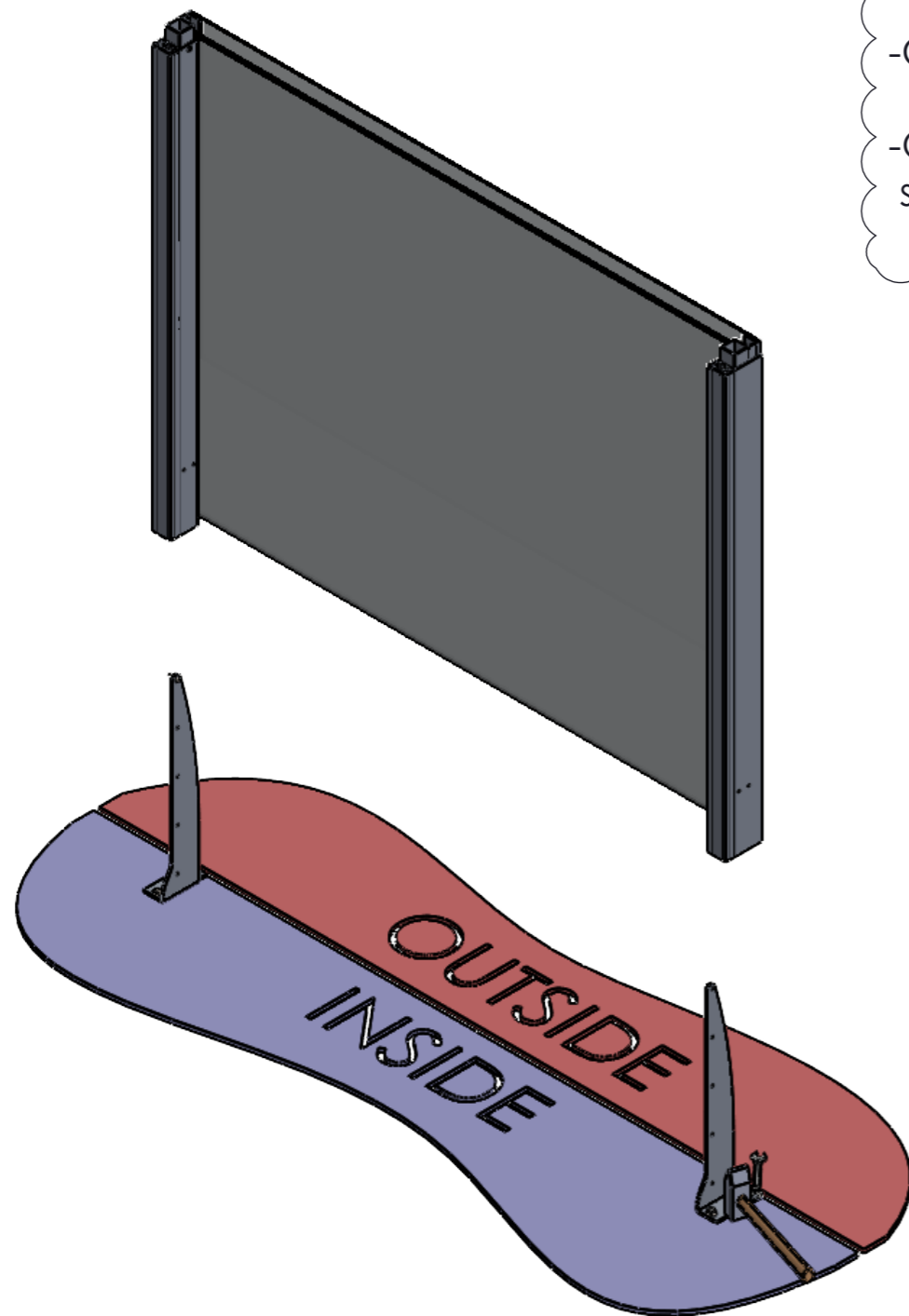


CLOSED VIEW

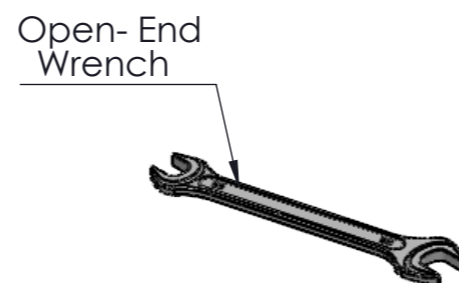
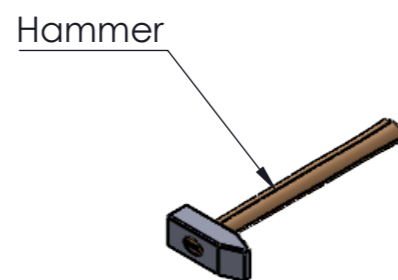
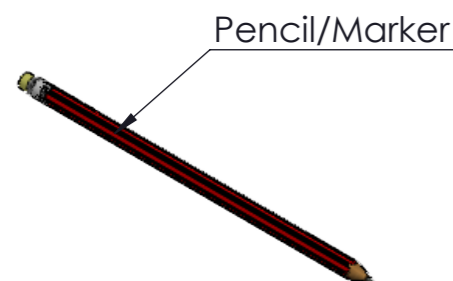
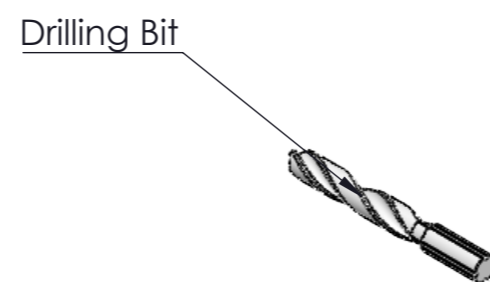
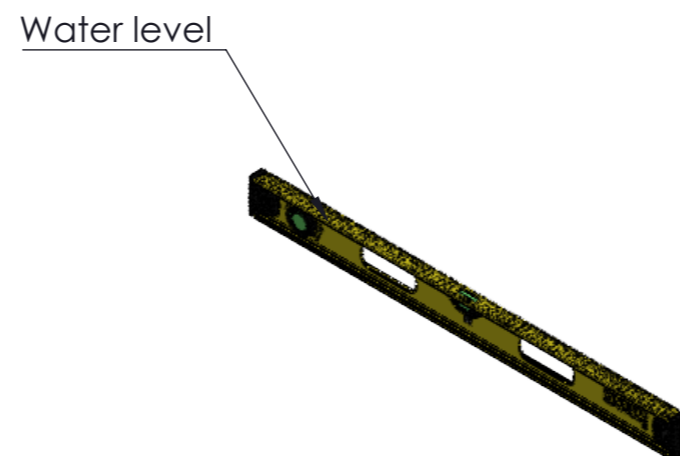
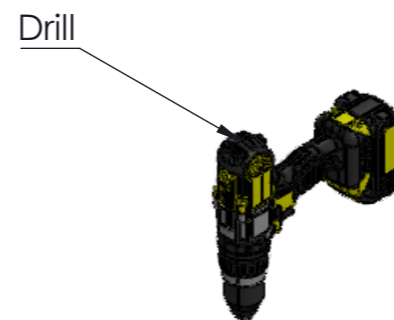


OPEN VIEW



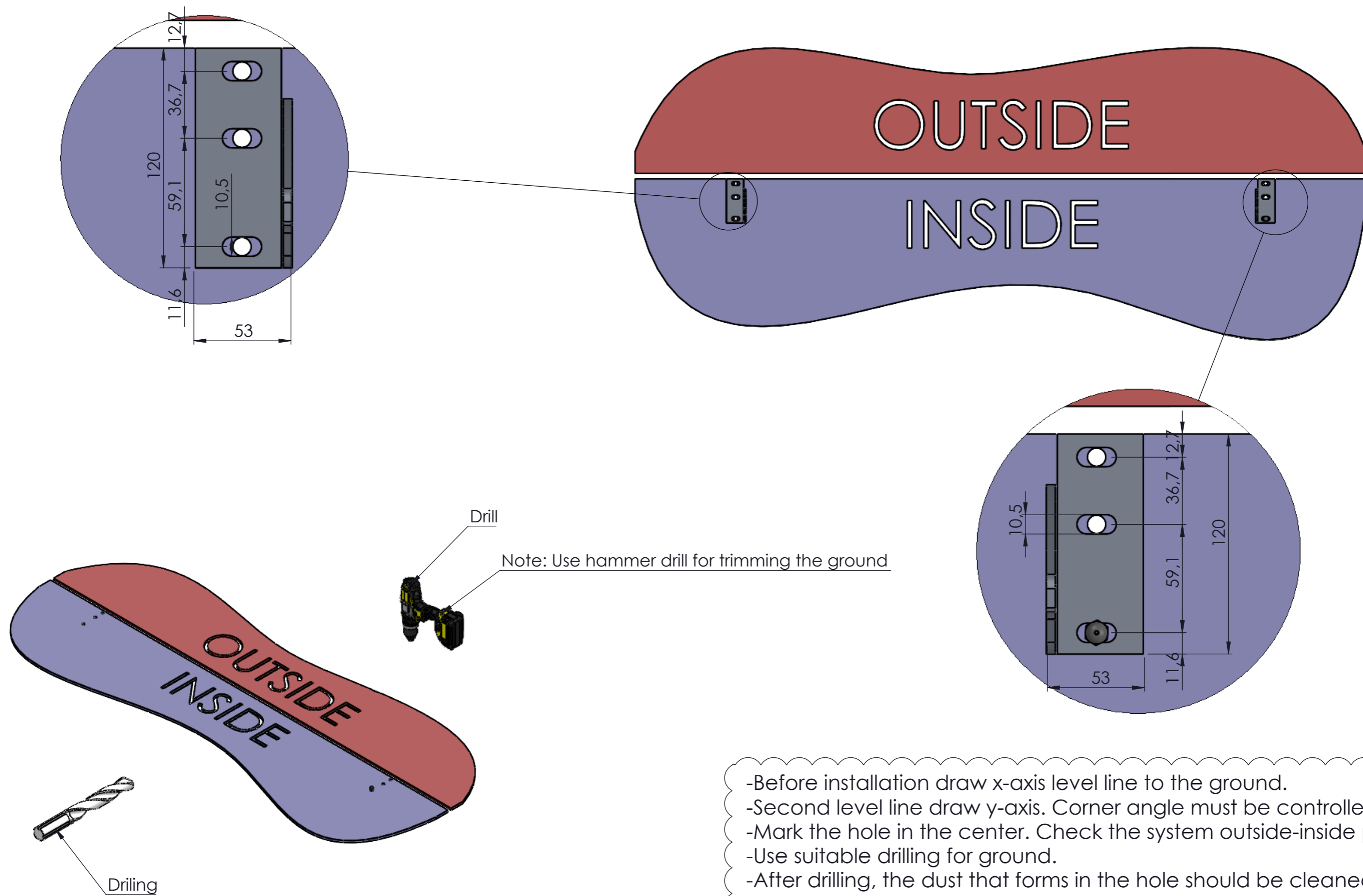


-Check the required parts and its numbers when the package is opened.
-Obtain the necessary hand tools before starting installation.



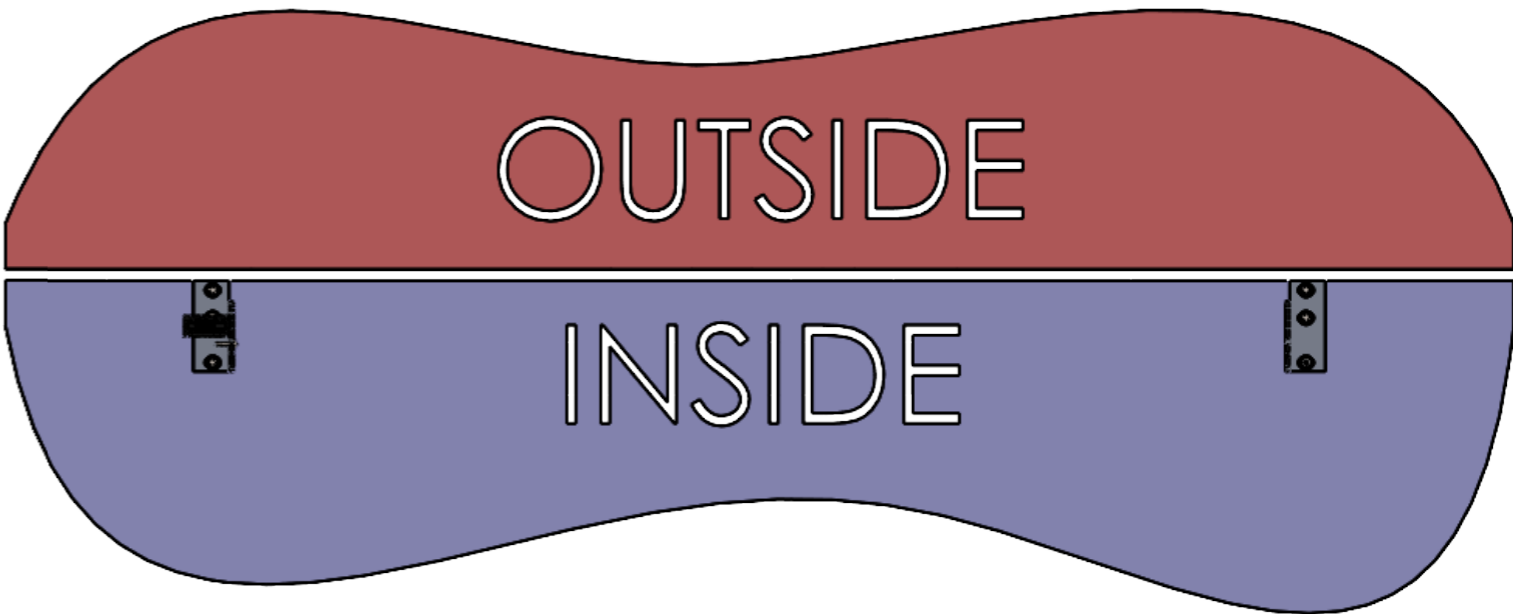
No	PRODUCT	DEFINITION	QUANTITY
1		KU-FC	1 Pcs
2		KU-FC Single leg kit	1 Pcs
3		Screw, Phillips Rounded Head Self Drilling, 4.8x25mm, DIN 7504 A2, Black Geomet Coating	12 Pcs
4		Snap-Cap,	12 Pcs
5		Example Expansion Bolt by customer	6 Pcs
6		Example Bolt Cap by customer	6 Pcs
7		Optional shim by customer	4 Pcs





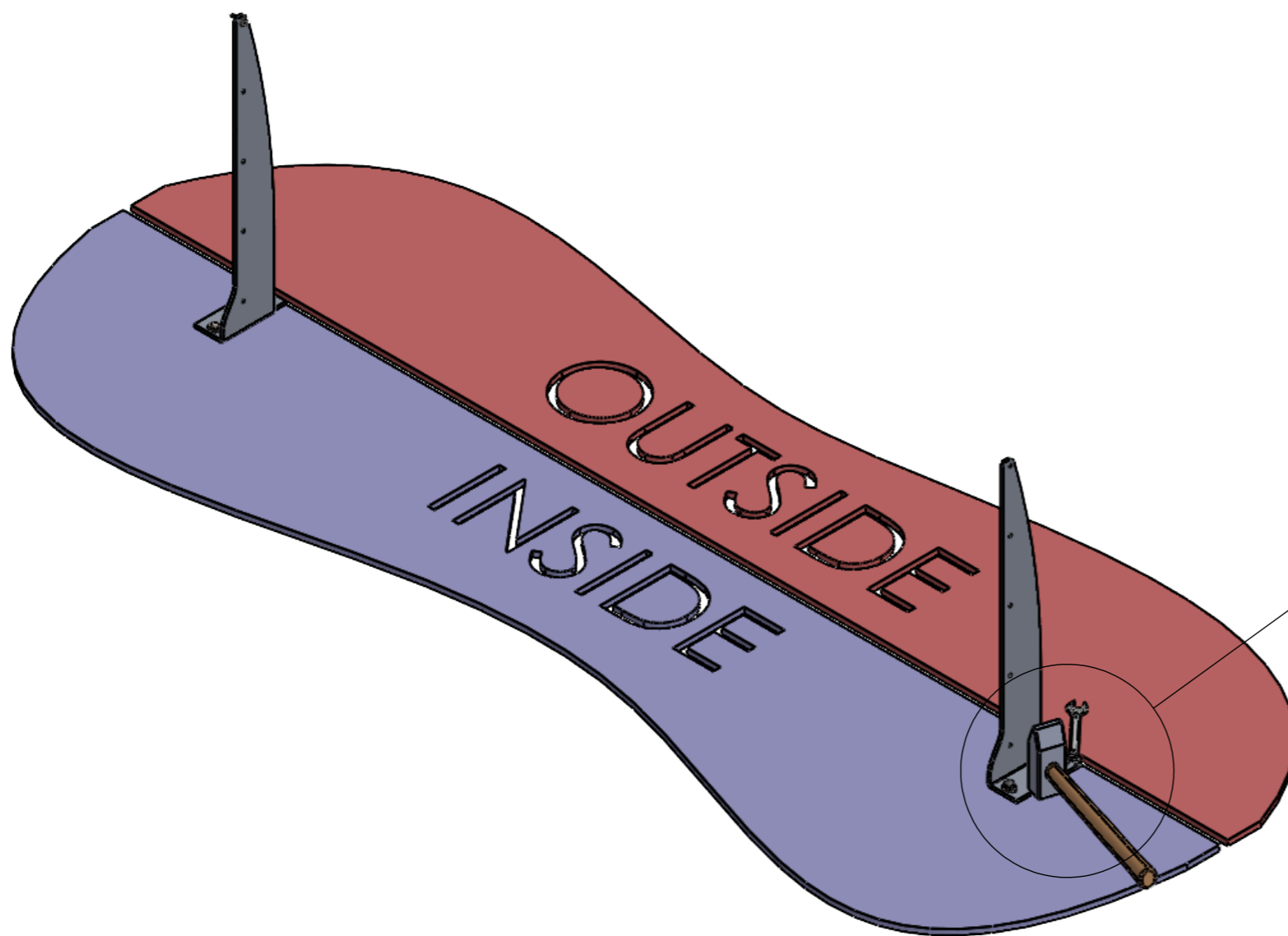
- Before installation draw x-axis level line to the ground.
- Second level line draw y-axis. Corner angle must be controlled.
- Mark the hole in the center. Check the system outside-inside positions.
- Use suitable drilling for ground.
- After drilling, the dust that forms in the hole should be cleaned.
- Clean the dust in the hole .



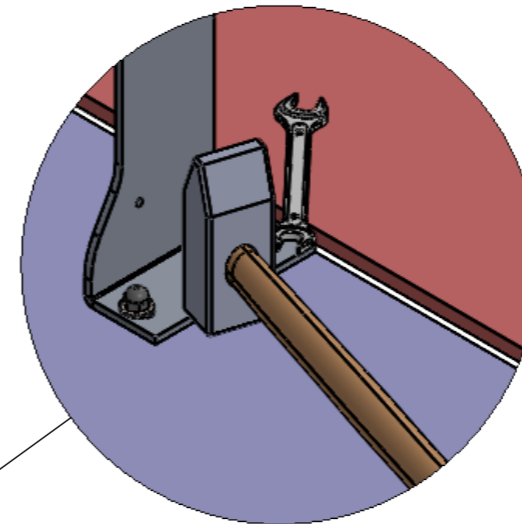
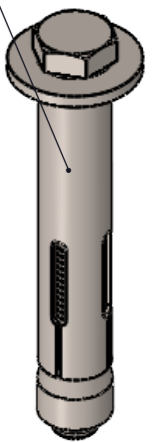


-Check vertical and horizontal level with a water level.
-Use leveling parts if anchor legs is not at same level.

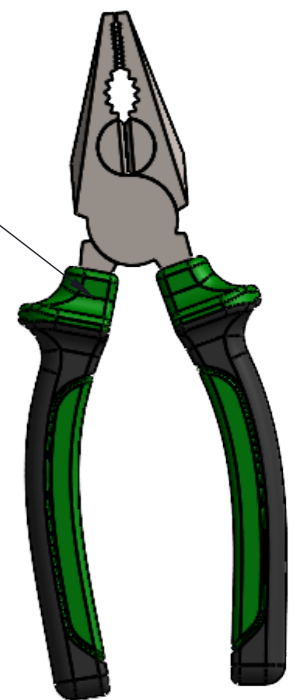




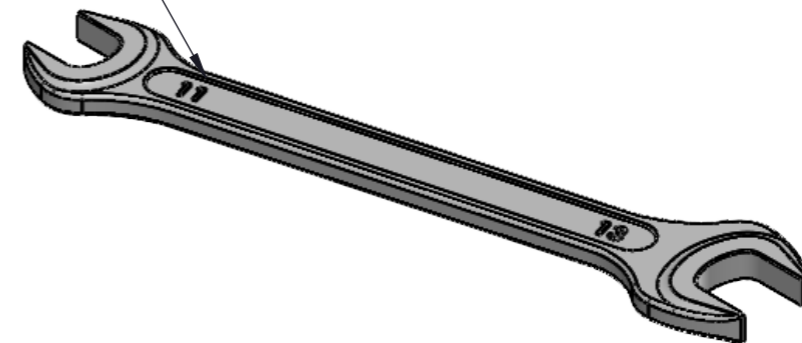
Expansion Bolt



Don't use pliers
during installation

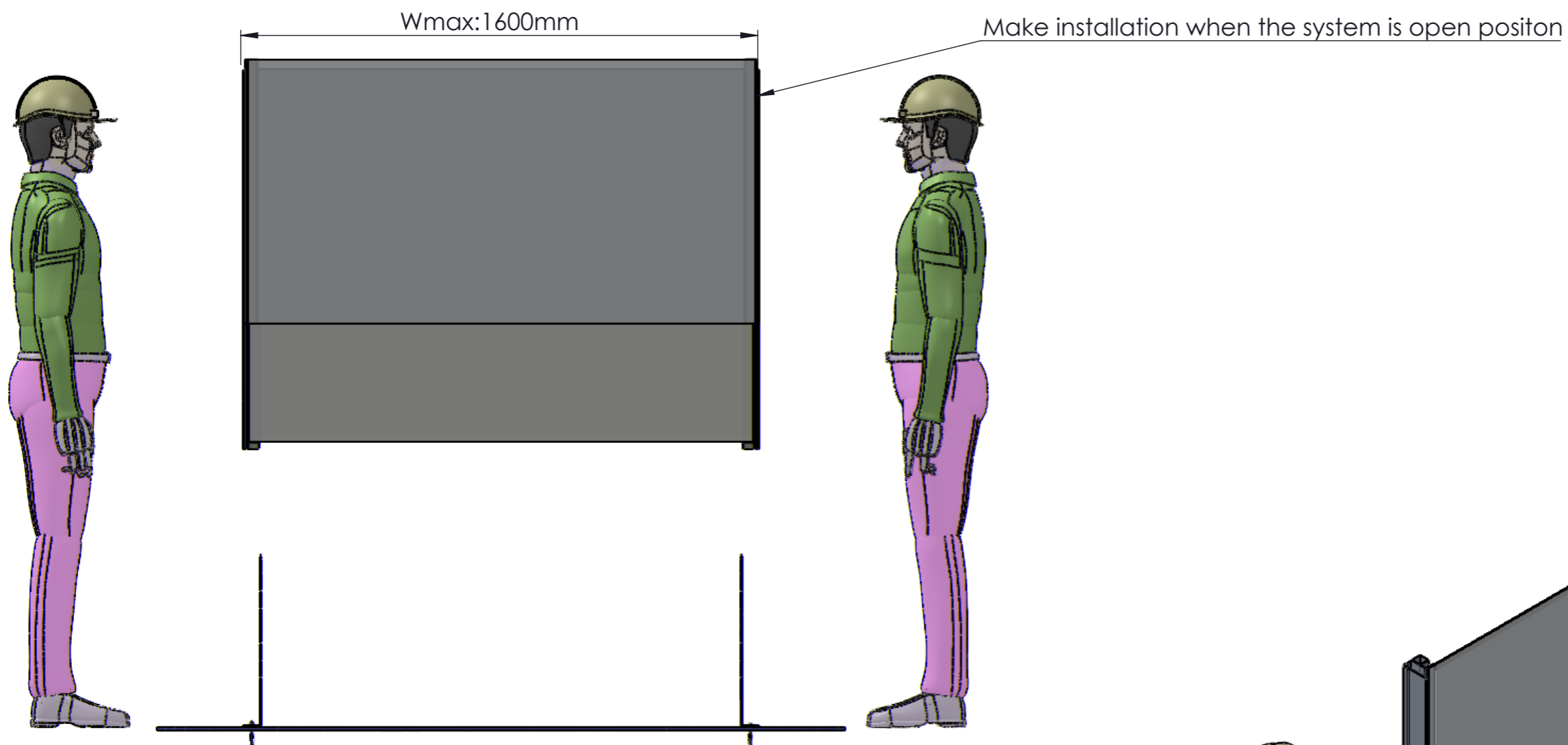


Open-End
Wrench

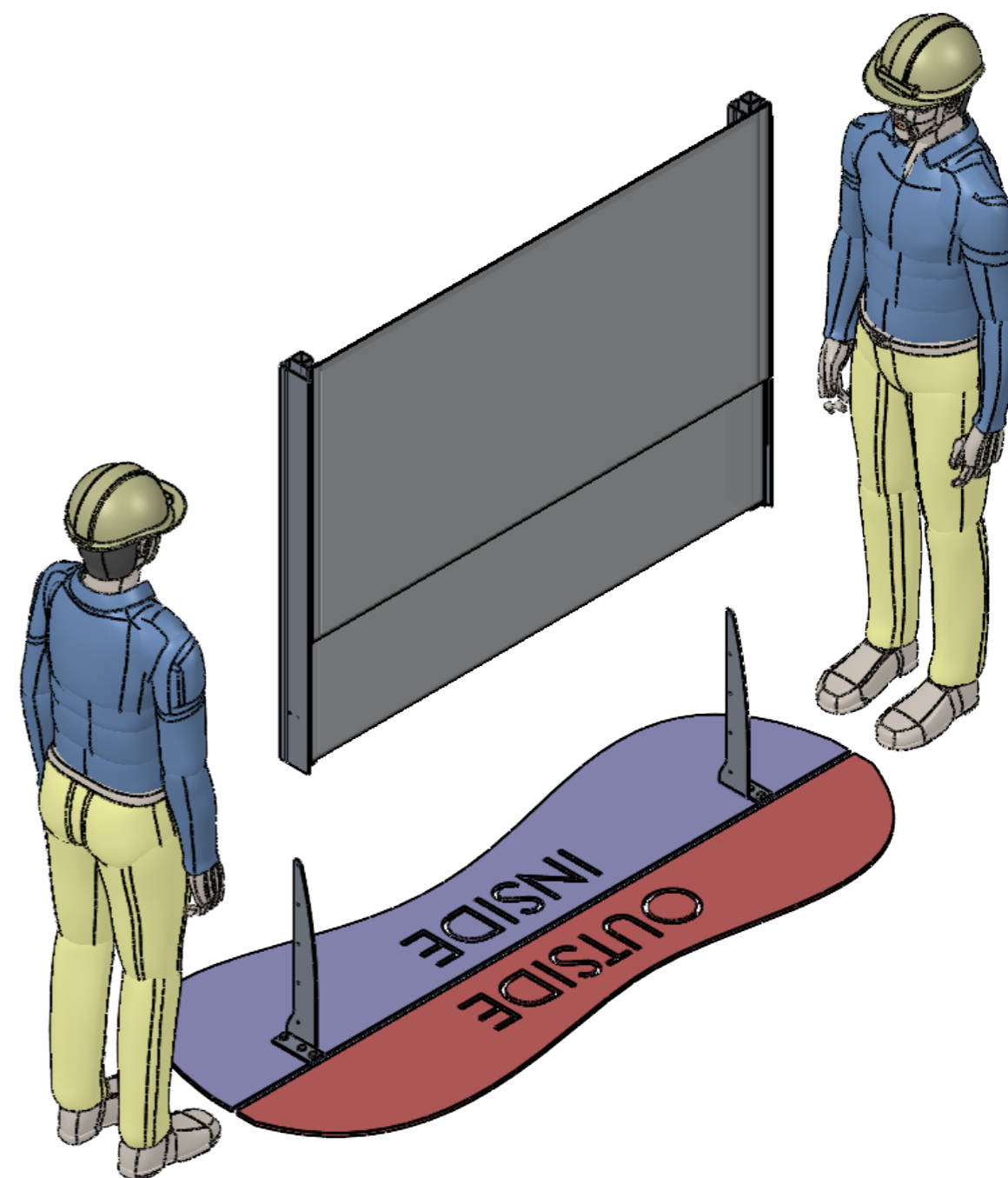


- The steel Expansion bolts size should be determined by your technical team in the site according to the project.
- Steel Expansion bolt must be gently stuck to their places.
- Steel Expansion bolt must be tightened with open-end wrench.





- System must be carried by two people.
- The product should be securely positioned on the iron foot by achieving balance.
- Ensure that the product is properly aligned and seated on the iron foot.

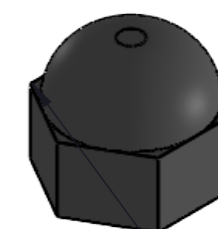
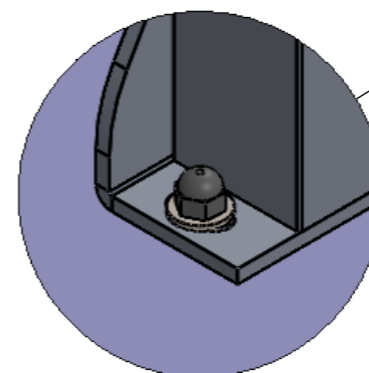
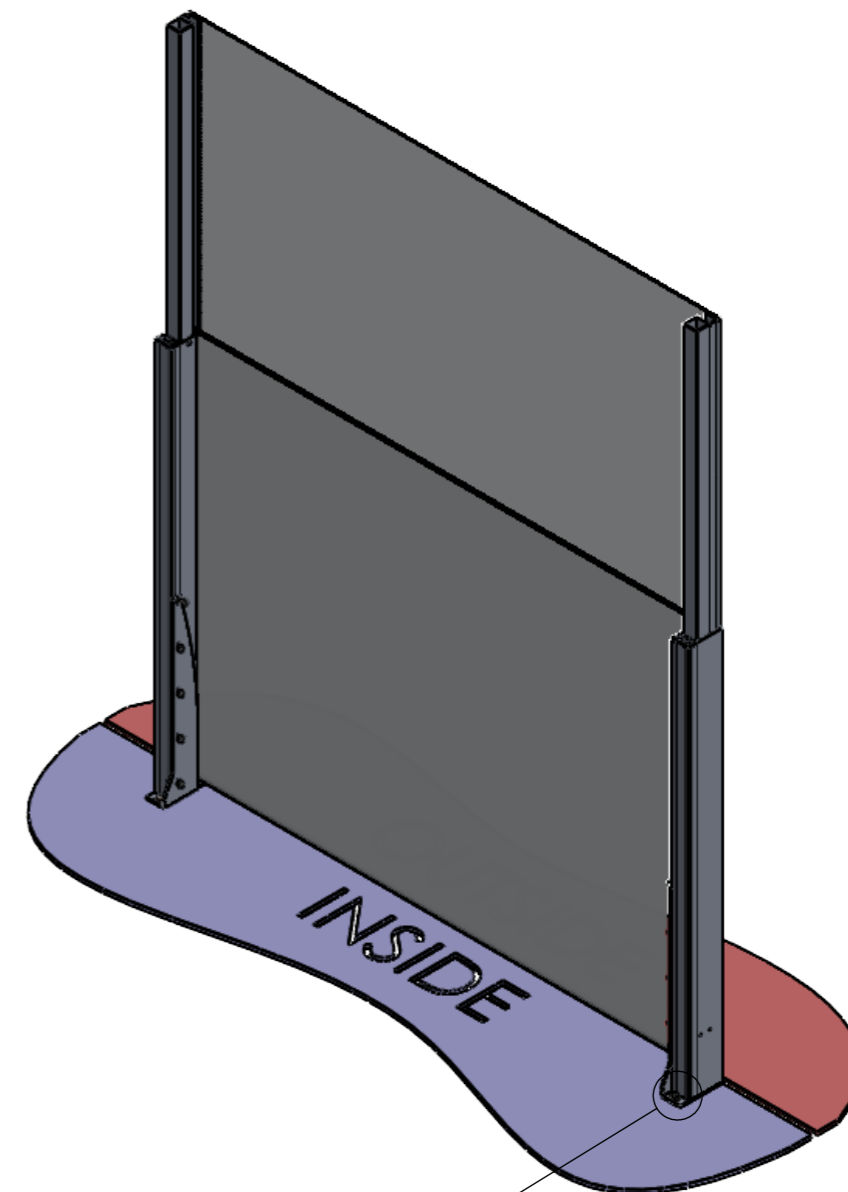
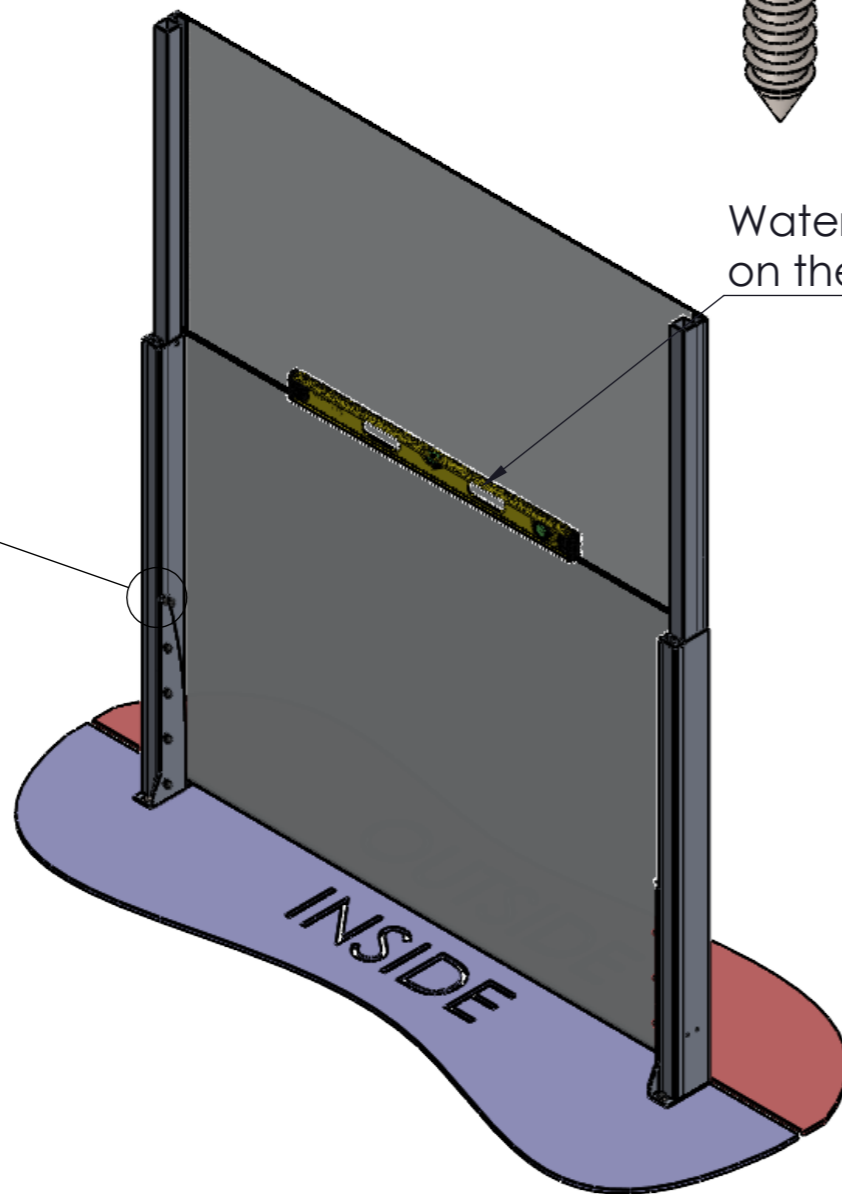
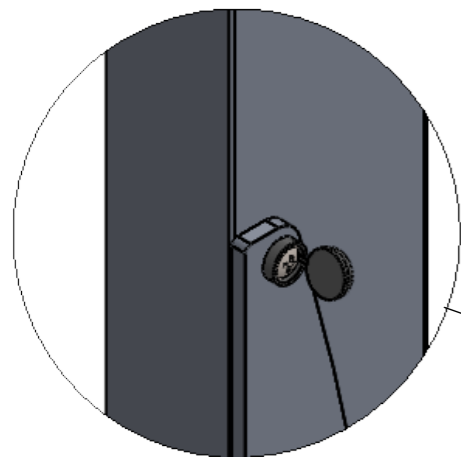


Snap-Cap

Screw, Phillips Rounded Head Self Drilling, 4.8x25mm
DIN 7504 A2, Black Geomet Coating

Water level must be
on the fixed - bottom glass.

Expansion bolt cap



LIBART
MOTION IN ARCHITECTURE
LIBART.COM

DOCUMENT NAME

DATE

VERSION

SYSTEM

PAGE NO

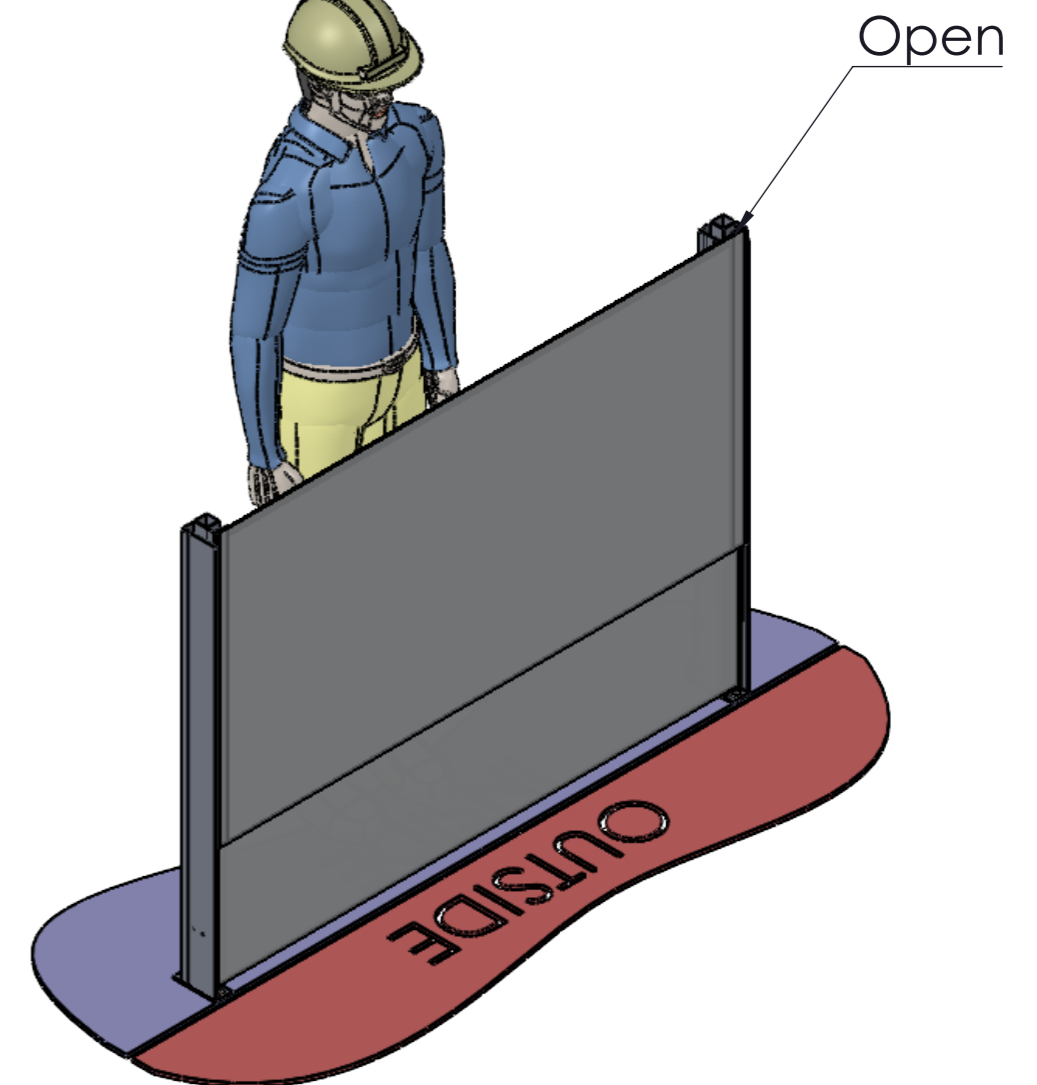
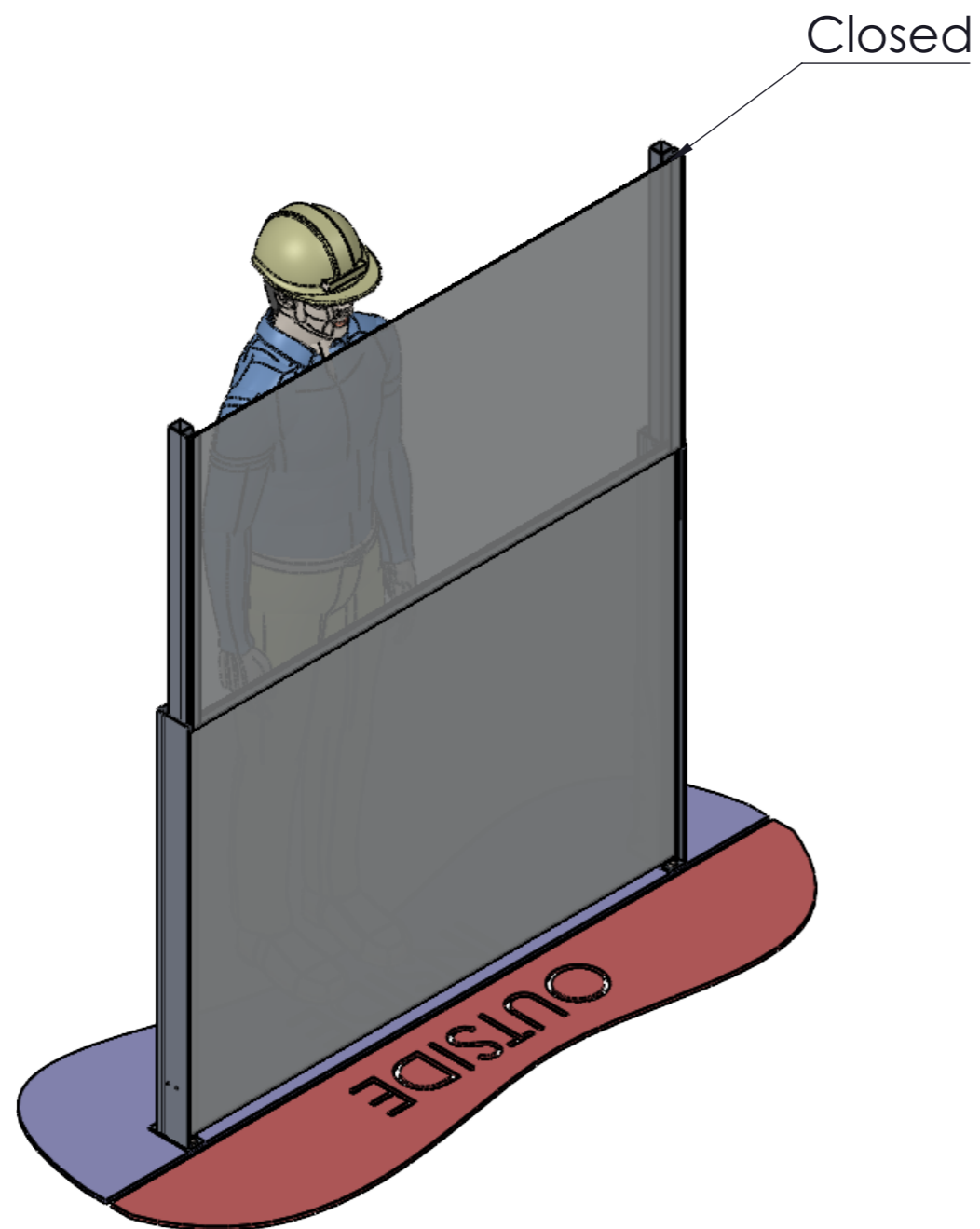
KU-FC INSTALLATION GUIDE

5.07.2023

001

KU-FC

7/10



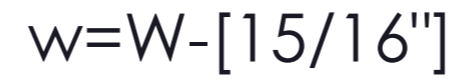
Test Sequence

1. System must be closed.
2. Confirm the fully closed position visually.
3. Open the system using both hands by pulling the upper glass steadily.
4. Check the opened system for both side locked.



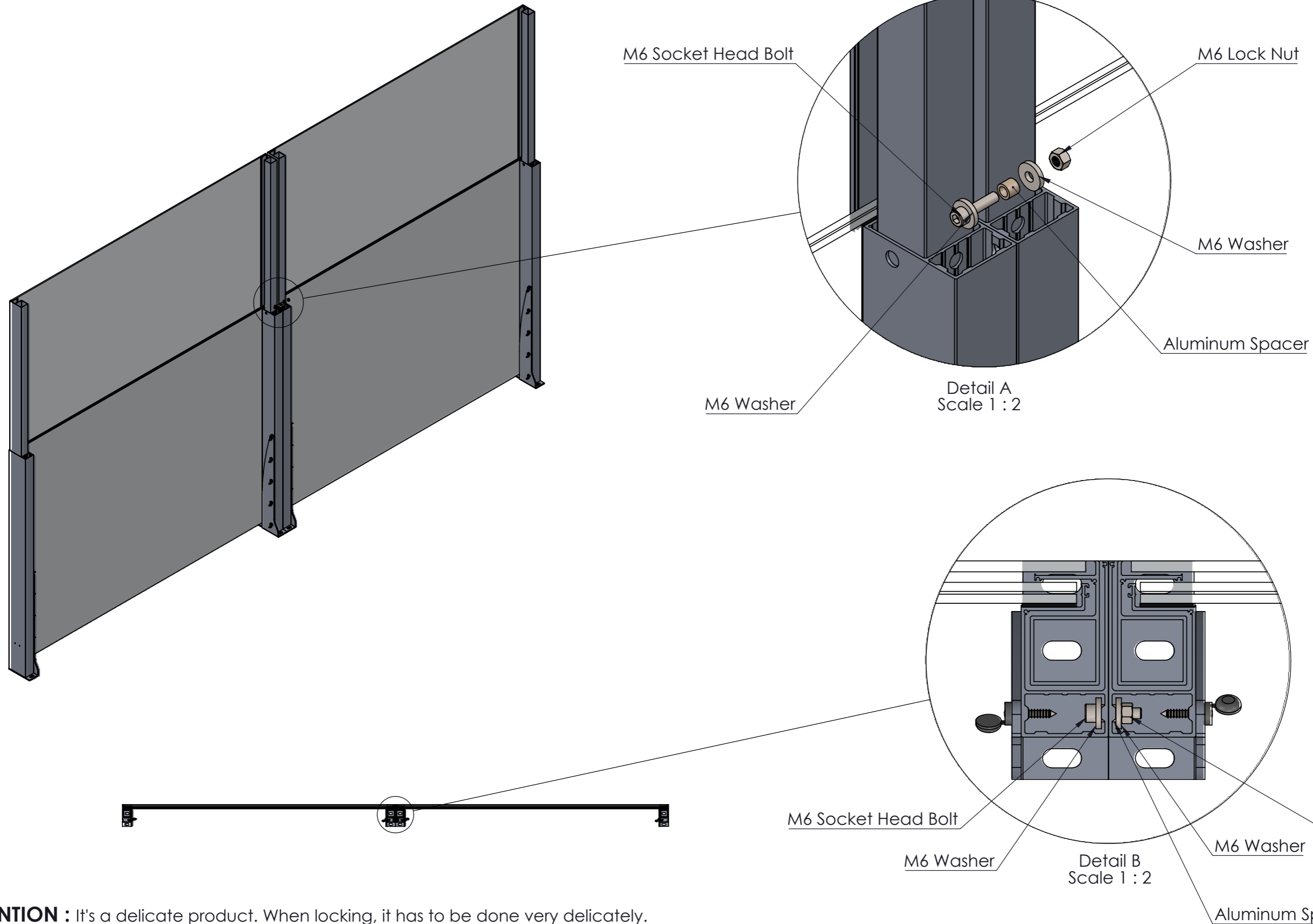
OUTSIDE

W



Single to Single

INSIDE



ATTENTION : It's a delicate product. When locking, it has to be done very delicately. When it is made too hard, the part that provides the locking can be deformed quickly.

DOC NAME	DATE	VERSION	SYSTEM	PAGE NO
KU-FC INSTALLATION GUIDE	5.07.2023	001	KU-FC	10/10