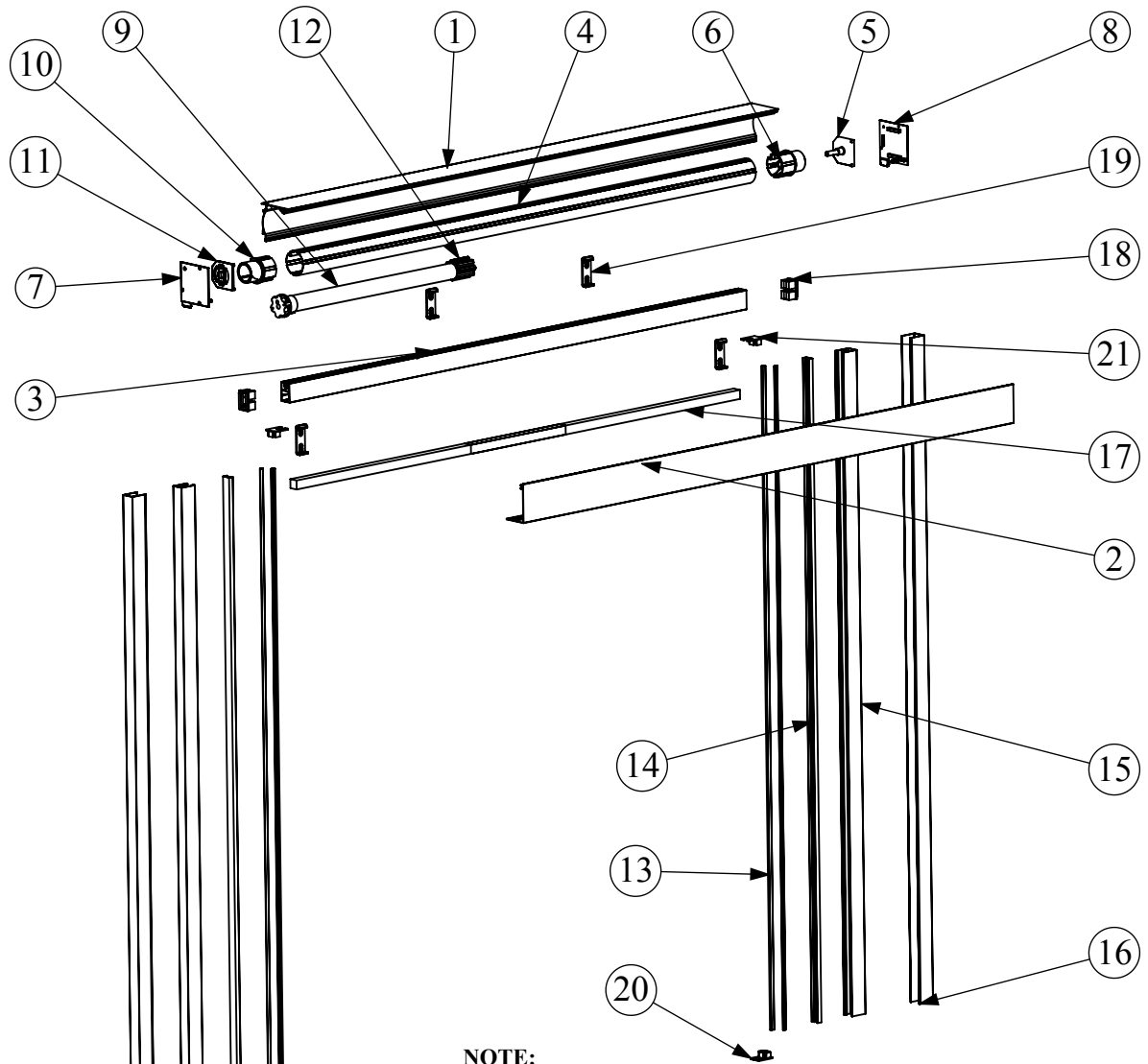



ITEM NO.	PART NUMBER	QTY.
1	Back Housing	1
2	Front Cover	1
3	Crossbar	1
4	Roll Tube	1
5	Housing Cap Pin Side Insert	1
6	Roll Tube Pin Side Insert	1
7	Left Housing Cap	1
8	Right Housing Cap	1
9	PanUltra Motor	1
10	Roll Tube Motor Insert	2-4
11	Housing Cap Motor Insert	1
12	Motor Drive Gear	1
13	Zip Guide Retainer	4
14	Zipper Retainer	2
15	Zip Guide Rail	2
16	Outside Rail	2
17	Steel Weight	2
18	Crossbar Cap	2
19	Mounting Bracket	2-4
20	D-Handle (standard)	(Spring) 1 set
21	Strike Plate	(Spring) 2-3
22	Magnet Base	(Spring) 2-3
23	Spring Stops	(Spring) 2
24	Recessed Handle (optional upcharge)	1-2



NOTE:
You will need to be able to turn the power on & off to each motor individually

MOTOR SPECS					
VOLTS	AMPS	Hz		TORQUE (IN/LBS)	RPM
120	2.1	60		309	20
DIMENSIONS ARE IN INCHES TOLERANCES: FRACTIONAL ± ANGULAR: ± 1°0' TWO PLACE DECIMAL ±.01 THREE PLACE DECIMAL ±.001		NAME	DATE		
		CHECKED			
		DRAWN	R. DESOTA		
		MATERIAL		COMMENTS:	
EST. AREA					
SQ. IN.					
EST. WT./FT.					
LBS./FT.		SCALE: 1:1		WEIGHT:	
				SHEET 1 OF 1	

STANDARD COMMERCIAL TOLERANCE FOR EXTRUDED ROD, BAR AND SHAPES APPLY UNLESS SPECIFICALLY SHOWN OTHERWISE.

PROPRIETARY AND CONFIDENTIAL

THE INFORMATION CONTAINED IN THIS DRAWING IS THE SOLE PROPERTY OF STOETT INDUSTRIES. ANY REPRODUCTION IN PART OR AS A WHOLE WITHOUT THE WRITTEN PERMISSION OF STOETT INDUSTRIES IS PROHIBITED.

